

# caracole



## BRACES

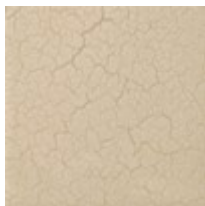
cla-423-406

**COLLECTION:** CARACOLE CLASSIC

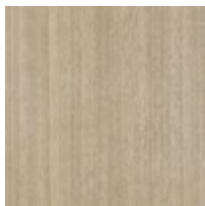
**DIMENSIONS:** 48 dia x 15.25H

Understated yet elegant, this artful cocktail table is a celebration of materiality and simple form. Features an ample top in an Ivory Craze crackle finish, supported by a trio of Brushed Gold metal blades, perfectly distributed to create open space for storage and display. A swiveling plinth base adds intrigue and function.

## FINISH:



Ivory Craze



Dry Martini



Brushed Gold