

# caracole



## CAMEO

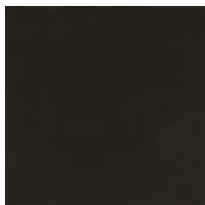
cla-423-282

**COLLECTION:** CARACOLE CLASSIC

**DIMENSIONS:** 22W x 24.75D x 34H

A sublime reflection of familiar forms, this dining chair depicts the delicate balance between subtlety and strength. Its delicate silhouette features a softly curved, split back, joined at the middle with a textured metal accent in lightly brushed chrome. Airy and light, with a substantial presence, it offers casual comfort with an air of elegance.

### FINISH:



Dark Chocolate



Lightly Brushed

Chrome

**FABRIC:**



2953-88CC-P  
Performance