

caracole



PERSEUS

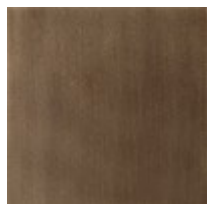
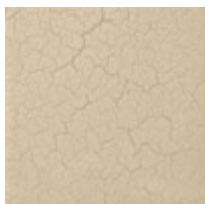
cla-423-041

COLLECTION: CARACOLE CLASSIC

DIMENSIONS: 36 dia x 1.5H

In keeping with nomenclature borrowed from Greek mythology, this simple, soft-edge mirror is named after Perseus, best known for the reflection in his polished shield that turned Medusa into stone. Features an Ivory Craze finish with a stone-like crackle texture and an accentuating bead detail in Brushed Gold paint. The perfect companion mirror to our Calypso dresser.

FINISH:



Ivory Craze

Brushed Gold Paint