

caracole



QUADRANT

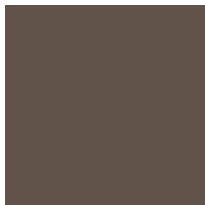
cla-422-419

COLLECTION: CARACOLE CLASSIC

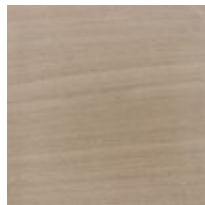
DIMENSIONS: 22W x 24D x 24H

Introduces the same minimalist aesthetic as our Cartesian Cocktail Table, only with a single quadrant of Creme Travertine on top, balanced within a Deep Bronze metal frame. Perfectly scaled to style alongside sofas and chairs, it offers two shelves for open storage and display.

FINISH:



Deep Bronze



Woodland Gray