

caracole



CADENCE

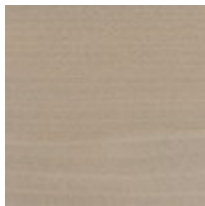
cla-422-063

COLLECTION: CARACOLE CLASSIC

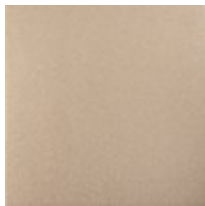
DIMENSIONS: 26W x 18.5D x 28H

An elegant presentation of adornment and form, the Cadence nightstand is dramatically defined by a top box with a single drawer, wrapped in an Alabaster-painted faux shagreen. A creamy Cappuccino finish on the drawers below highlights the linear grains of Coffee Platano veneers, accentuated by decorative backplates in a Whisper of Gold and custom hardware with a ceramic inset.

FINISH:



Cappuccino



Sparkling Argent



Alabaster Painted
Faux Shagreen