

caracole



OPEN SEATING

cla-421-283

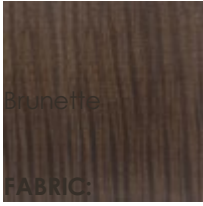
COLLECTION: CARACOLE CLASSIC

DIMENSIONS: 22.75W x 24D x 34H

Open and inviting with a dramatic curve to the back, this dining chair will delight guests and hosts alike. A warm Brunette finish accentuates its beautifully figured sycamore veneer and tall tapered legs, subtly contrasted by a light blue-gray performance fabric. Intentionally designed for a comfortable seating experience with the luxury of worry-free entertaining.

CONSTRUCTION: Curved Plywood Back. | Slip seat cushion

FINISH:



Truette

FABRIC:



2859-52CC-P
Performance