

caracole



CLUB MEMBER AT THE COUNTER

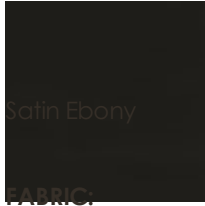
cla-420-313

COLLECTION: CARACOLE CLASSIC

DIMENSIONS: 22W x 22.5D x 37.75H

Comfortable and charismatic, this counter stool takes inspiration from the alluring statement made by our Club Member At The Table chair. A curve to the back adds flair, emphasized by metal fretwork and ferrules in a Whisper of Gold. Poised on tall legs in Satin Ebony, a plush upholstered seat and back in a lustrous performance velvet beckons hours of entertaining conversation. Stretchers are set at just the right height for added comfort and ease of getting in and out. Also available in bar stool height.

FINISH:



2579-75CC-P
Performance