

caracole



RESERVED SEATING

cla-420-274

COLLECTION: CARACOLE CLASSIC

DIMENSIONS: 26W x 24.5D x 32H

AVAILABLE IN CARACOLE COUTURE CUSTOM UPHOLSTERY PROGRAM For a fresh interpretation on a low, modern klismos chair, this silhouette takes on dramatic style when you view the wide panel that sets off its back. A neutral sateen fabric with a subtle moire pattern fully surrounds the square upper back and seat cushion that rest on an exposed wood frame and sabre legs finished in Seal Skin. This is a chair with truly polished appeal.

FINISH:

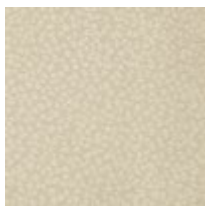


Soft Silver Paint



Lightly Brushed
Chrome

FABRIC:



3112-11CC-P
Performance