

# caracole



## MEDIA MOGUL

cla-419-531

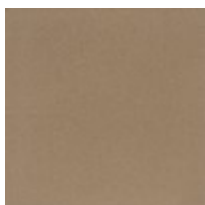
**COLLECTION:** CARACOLE CLASSIC

**DIMENSIONS:** 84.25W x 21.5D x 32H

Styled to perfection, this glamorous console commands attention. Its clean silhouette features a rich mix of materials that captures the inherent opulence of gold, bronze, and mirrored finishes. The console is framed in a glistening mirrored border that stretches around its face while each of its four doors boasts a frosted Bronze mirrored panel punctuated by geometric hardware. Inside, you'll find adjustable shelves and cord management holes designed to facilitate housing your media and components. Sophisticated yet modern in its outlook, this versatile piece is charismatic enough to build a room around.

**CONSTRUCTION:** 2 Int storage sides (w/ shelf): 41 x 20.5 x 11.5 | Leg: 5.25" H

**FINISH:**



Golden\_Shimmer