

# caracole



## POOL PARTY

cla-419-2020

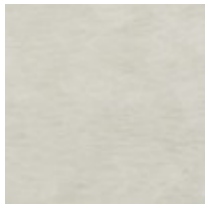
**COLLECTION:** CARACOLE CLASSIC

**DIMENSIONS:** 78W x 56D x 30H

What makes this dining table unique is sure to render it a beloved classic. Its straightforward presence boasts a timeless oval shape reminiscent of a swimming pool and finished in a harmonious combination of finishes, including Oyster and Soft Silver Leaf. Inspired by undulating ripples of water in the sunlight, its top is crafted of figured Lacewood shimmering in Oyster and reflects the energy of moving water that's both calming and restorative. A Soft Silver Leaf finish highlights this table's apron and legs and transitions to decorative metal ferrules in Whisper of Gold that adds a finishing touch.

**CONSTRUCTION:** Apron height: 26,125".

### FINISH:



Oyster Shell



Soft Silver Leaf