

# caracole



## INSIDE SCOOP

cla-418-533

**COLLECTION:** CARACOLE CLASSIC

**DIMENSIONS:** 100W x 22D x 32.5H

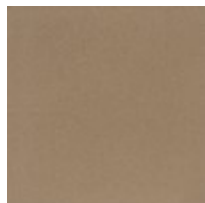
Expertly combining style and storage, this elegantly envisioned credenza boasts a shapely silhouette highlighted by a Platinum Blonde finish with Golden Shimmer Paint trim. Its bowed front is graciously inspired and includes four doors with storage for everyday essentials. Behind each outside door you'll find an adjustable shelf and tray drawer. Two adjustable shelves are revealed behind its center doors, with wire management access holes conveniently located in its back panel. Completing the brilliant look are metal bracket feet finished in a Golden Shimmer Paint for fashion-forward sophistication.

**CONSTRUCTION:** Metal bracket foot height: 4.750".

### FINISH:



Platinum Blonde



Golden Shimmer