

caracole



SOCIAL MEDIA

cla-418-532

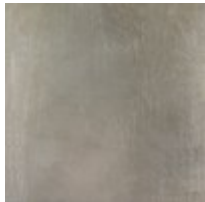
COLLECTION: CARACOLE CLASSIC

DIMENSIONS: 104W x 18D x 30H

Destined to steal the scene, this luxurious console offers exquisite styling and modern media storage. Its signature look is brought to life with six doors featuring antique mirror fronts highlighted with elegant fret work in Taupe Silver Leaf. Balanced in every way, its symmetrical design is accented by unique Mother of pearl hardware. Inside, you'll find integrated wire management and ventilation that makes media and electronics storage a breeze. Two soft-close tray drawers add function to its center section while two adjustable shelves can be found behind each pair of outside doors. Fashionable metal feet and stretchers add beauty to its long, lean profile while emphasizing its overall allure.

CONSTRUCTION: Below stretchers: 2.500".

FINISH:



Taupe_Silver_Leaf