

caracole



HALF THE TIME

cla-418-451

COLLECTION: CARACOLE CLASSIC

DIMENSIONS: 58W x 28D x 30H

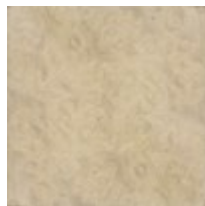
A captivating design, this dramatic desk is fit for a star—or anyone who wants to infuse their day with a touch of glamour. Its half-moon shape features a top of mottled Anegre veneers finished in an elegant Platinum Blonde finish with Platinum Blonde Madrona Burl border and a Golden Shimmer silkscreen detail. Its writing surface and drawer front are covered in an elegant ivory-colored textured vinyl for fashionable utility. An undeniably shapely piece, it boasts an apron and tapered legs finished in Ivory Paint with Golden Shimmer Paint highlights. Meanwhile, metal ferrules and a rounded stretcher in plated Champagne Gold add a touch of bling to its distinctive design.

CONSTRUCTION: Space from floor to bottom stretcher: 4.500". | Apron height: 25.250".

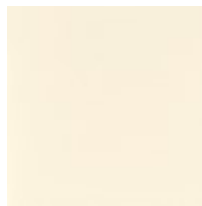
FINISH:



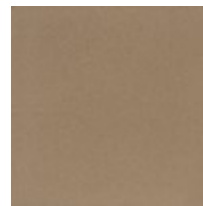
Platinum Blonde



Platinum Blonde Burl



Ivory



Golden Shimmer

FABRIC:



8067-21CC

