

caracole



SOCIAL GATHERING

cla-418-406

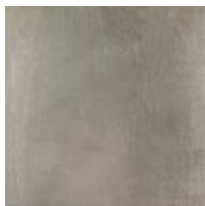
COLLECTION: CARACOLE CLASSIC

DIMENSIONS: 48 dia x 19H

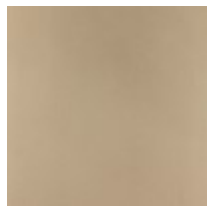
Add everyday elegance to any space with this open and airy round cocktail table. It features a round lower shelf boasting a delightful metal fret work design in a pleasing open graphic pattern. A round glass top with 1/4" bevel is supported with metal legs and creates a space for storage and display. Light in appearance yet substantial in construction, this distinctive beauty wears a finish of Taupe Paint highlighted with Taupe Silver Leaf.

CONSTRUCTION: Floor to Shelf: 3.500". | Distance above the shelf: 12.500".

FINISH:



Taupe Silver Leaf



Taupe Paint