

caracole



CHITTER CHATTER

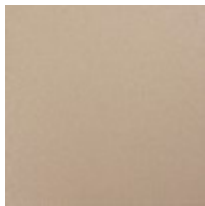
cla-418-282

COLLECTION: Caracole Classic

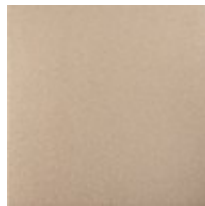
DIMENSIONS: 20.25W x 24.5D x 39.5H

A classic for every season, this refined chair adds drama and sophistication to a dining space. Its timeless silhouette is highlighted with a Radiant Pearl finish while Sparkling Argent highlights bring its lovely curves into focus. Sabre legs distinguish its back while tapered front legs convey timeless elegance. Wearing a classic neutral fabric, it represents the epitome of stylish dining.

FINISH:

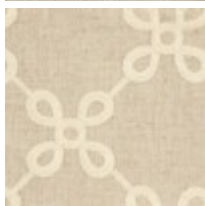


Radiant Pearl



Sparkling
Argent

FABRIC:



2321-87CC,
8268-35CC