

caracole



TOAST OF THE TOWN

cla-418-211

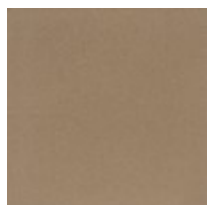
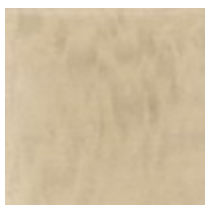
COLLECTION: CARACOLE CLASSIC

DIMENSIONS: 76W x 19D x 38.5H

Destined to be the "Toast Of The Town", this elegant case piece brings glamour home. Its distinctive design feels visually light yet significant. An exquisitely sophisticated Platinum Blonde finish brings its mottled Anegre alive while creating modern glamour. Behind each outside door you'll find two adjustable shelves while an adjustable shelf and tray drawer lie behind its center doors. Intriguing door hardware adds a jewelry-like decorative element, as do its four metal feet finished in Golden Shimmer Paint.

CONSTRUCTION: Touch Latch Doors.

FINISH:



Platinum
Blonde

Golden
Shimmer