

# caracole



## TOE THE LINE

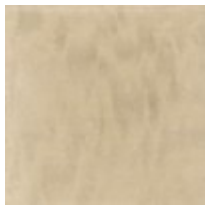
cla-418-201

**COLLECTION:** CARACOLE CLASSIC

**DIMENSIONS:** 90W x 44D x 30H

The Grande Dame of the room, this elegant dining table will never disappoint. Designed to toe the line in every way, it's substantial in presence and dimension. The classic trestle design is highlighted by exotic mottled Anegre veneers and finished in a graceful Platinum Blonde finish that captures the timeless elegance of the Old Hollywood era. An Ivory Painted finish distinguishes its trestle base and apron while plated Champagne Gold ferrules and decorative hardware add the finishing touch. Perfect for groups small and large, this timeless table can accommodate up to twelve chairs once it's extended to 130" with two 20" leaves. It's undoubtedly the ultimate gathering space for groups small and large.

### FINISH:



Platinum Blonde



Ivory