

# caracole



## IN THE END

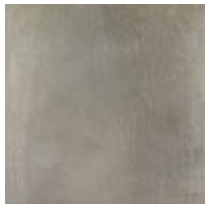
cla-417-4111

**COLLECTION:** CARACOLE CLASSIC

**DIMENSIONS:** 28W x 22D x 24H

Perfect in proportion and exquisitely styled, the unique design of this oval end table is sure to please. Its metal frame and cast metal legs are finished in shimmering Taupe Silver Leaf and will complement a variety of other finishes. A tempered glass top is silver leafed on the back to add elegance to the top.

### FINISH:



Taupe\_Silver\_Leaf