

caracole



SERVE YOURSELF

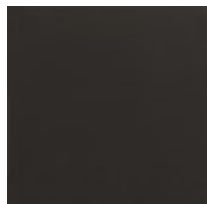
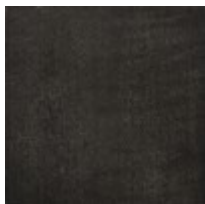
cla-417-214

COLLECTION: CARACOLE CLASSIC

DIMENSIONS: 72W x 20D x 39H

A vision in the beauty of contrast, this fascinating half-moon console wears a dark, Charcoal Anegre finish and a Blue Sandstone top. Each of its four doors is highlighted by jewelry-like pulls and opens to reveal a Seal Skin interior. Inside, a storage drawer and adjustable shelves ensure everything has a place. With dramatic charm, its modern attitude is assured with the addition of metal ferrules in Whisper of Gold. This is just the piece to design a room around.

FINISH:



Charcoal
Anegre

Seal Skin

Whisper of
Gold