

# caracole



## GOOD NIGHTS SLEEP - KING

cla-417-126

**COLLECTION:** CARACOLE CLASSIC

**AVAILABLE AS:**

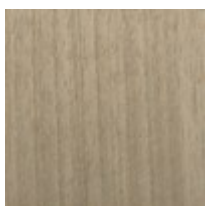
King  
Queen  
California King

**DIMENSIONS:** 80.5W x 90.75D x 58H

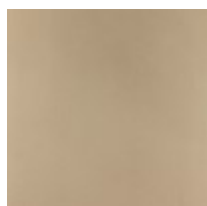
Nothings more valuable than a Good Night's Sleep. More than just beautiful, this timeless bed adds sophistication to a space. Its shapely silhouette is crafted of Koto panels finished in an exquisite Champagne Shimmer finish. Metal ferrules in Whisper of Gold cap the legs and add an elegant finishing touch.

**CONSTRUCTION:** Bottom of side rail to floor: 6.5". | Top of side rail to floor: 15.5". | Footboard height: 26.5". | Mattress opening: 78"W x 83"L.

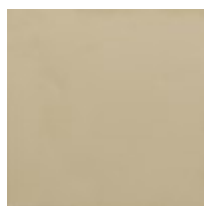
**FINISH:**



Champagne



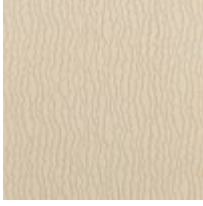
Taupe Paint



Whisper of Gold

Shimmer

**FABRIC:**



3090-87CC