

caracole



DRESS FOR SUCCESS

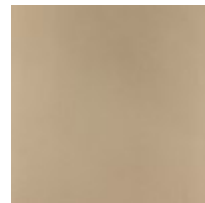
cla-416-011

COLLECTION: CARACOLE CLASSIC

DIMENSIONS: 68W x 19D x 36H

This dresser brings the classic chevron pattern roaring into the new century. Inspired by an elevator at a Ritz Carlton hotel, the quarter-sawn oak drawers are softly curved, and inlaid with a chevron pattern and finished in warm Heron Grey. The top center drawer pulls out and drops down to create a writing surface. The bank of oak drawers resides inside a crisp, Wedding Dress White frame that sits atop elegantly tapered legs. This piece flawlessly crosses generations with its updated appeal.

FINISH:



Wedding Dress
White

Heron Grey

Soft Taupe

Taupe Paint