

caracole



ANOTHER ROUND COUNTER STOOL

cla-024-311

COLLECTION: CARACOLE CLASSIC

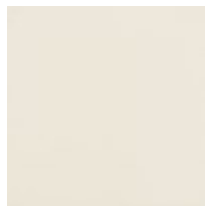
DIMENSIONS: 22.5W x 23.5D x 39.25H

This modern counter stool is the perfect height for a breakfast counter or bar. It features a comfortably curved wooden back glowing Moonstone. The round tapered legs are dressed in Almond White paint. A metal hoop in Champagne Gold, set at just the right height for getting in and out, adds shimmer and gives leverage to swivel with ease.

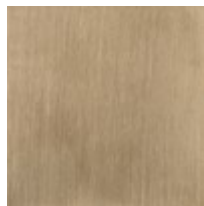
FINISH:



Moonstone



Almond Milk



Champagne Gold

FABRIC:



9169-35CC