

caracole



APOLLO

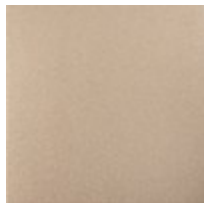
cla-024-284

COLLECTION: CARACOLE CLASSIC

DIMENSIONS: 20W x 22.5D x 36.5H

A contemporary take on neoclassical styling, this round back dining chair adds welcoming warmth and a note of tonal glamour. Meticulously tailored in a metallic light gold woven fabric, its Sparkling Argent paint frame gives a nod to the Atomic Age with tapered legs and iconic metal ferrules in a Deep Bronze. This chair is perfectly pitched for comfortable seating from dining table to desk or bedroom vanity.

FINISH:



Sparkling Argent



Whisper of Gold