

# caracole



## EPOCH ARMCHAIR

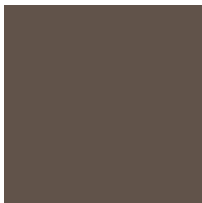
cla-024-271

**COLLECTION:** CARACOLE CLASSIC

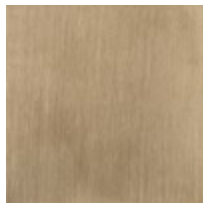
**DIMENSIONS:** 23W x 22D x 31.5H

This armchair lives up to its memorable name. Epoch is a study in contrasts. The oval, curved back and tight seat feature Ivory woven performance fabric. The back and seat float in an open, dark frame in Deep Bronze metal enhanced with Champagne Gold metal ferrules. This is a piece that compliments classic or contemporary décor.

### FINISH:



Deep Bronze



Champagne Gold

### FABRIC:



2637-34CC-P