

# caracole



## BEAU

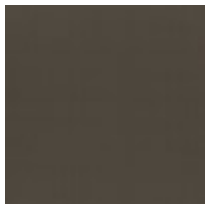
cla-024-081

**COLLECTION:** CARACOLE CLASSIC

**DIMENSIONS:** 56W x 17D x 19H

This substantial bench exudes playful postmodern style. Looking at its profile, the piece is shaped from two pieces of Brushed Deep Bronze heavy-gauge metal sheets that mirror each other in shape, with one running underneath the other. Both sheets are bent with u-shaped kinks at the top edges of the seat. The bench's seat is upholstered in soft Ivory Mohair Wool Blend Velvet for a dramatic contrast to the heavy base.

### FINISH:



Brushed\_Deep\_Bronze

**FABRIC:**



2681-80CC