

caracole



MUSE DRESSER

cla-024-013

COLLECTION: CARACOLE CLASSIC

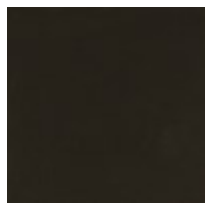
DIMENSIONS: 79.5W x 23D x 32H

Oval, sleek and handsome, the Muse is an inspirational piece distinguished by the contrast of dark and light materials. Its sultry top is a Smoked Bronze mirror, encased with a thin bar rail in Deep Bronze metal on each curved end. The case, in mottled Curupixa wood with a cloud-like Nebulous finish, lends wavy movement to the piece. Strong curved doors temper the piece on each end along with six slightly curved, soft-close drawers with grooved finger pulls. The two end-panel doors have hidden storage for jewelry and ties. The base is Dark Chocolate; the interior finish is UV Linen.

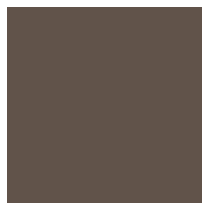
FINISH:



Nebulous



Dark Chocolate



Deep Bronze

