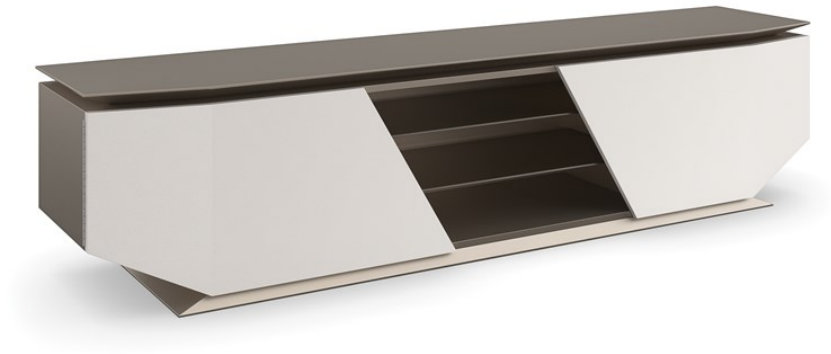


# caracole



## AXIS

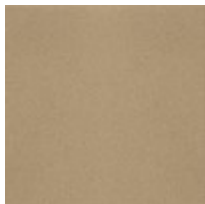
cla-023-532

**COLLECTION:** CARACOLE CLASSIC

**DIMENSIONS:** 95W x 20D x 22H

A futuristic form meets modern function for a statement-making media console that defies the ordinary. Parallel planes intersect with angled lines to create its multifaceted design, artfully defined by a reflective metallic finish. Offers ample storage with Smoked Bronze glass shelves and cutouts along the back for wire management.

## FINISH:



Warm Reflections



Oyster