

caracole



NUAGE

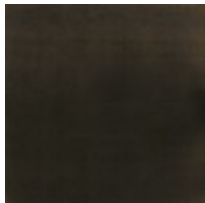
cla-023-291

COLLECTION: CARACOLE CLASSIC

DIMENSIONS: 23W x 25.5D x 36H

With a shapely silhouette inspired by the scalloped edge of a billowing cloud, this dining chair invites comfort and a sensory experience. Beautifully tailored in a softly textured chenille melange fabric, its Almost Black frame lends classic contrast. Brushed Gold front metal ferrules add a sophisticated finishing touch.

FINISH:



Almost-Black

FABRIC:



2989-34CC-P
Performance