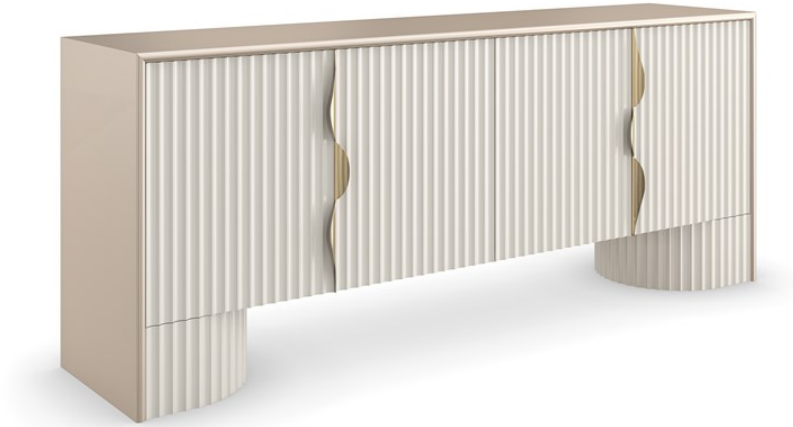


# caracole



## CORINTHIAN

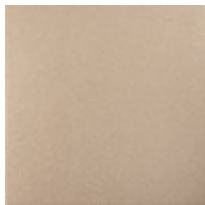
cla-022-532

**COLLECTION:** CARACOLE CLASSIC

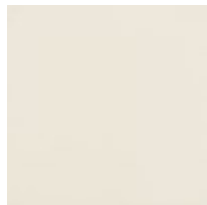
**DIMENSIONS:** 80W x 17D x 31.5H

Inspired by the classic architecture of a Corinthian-style column, this media console makes an ornate yet elegant statement in a soothing neutral hue. Features fluted door fronts, warmly complemented by metallic ribbon pulls and an ample top in a Sparkling Argent finish. Its spacious interior offers open storage and two finger-pull drawers. Cutouts in the back allow for wire management.

### FINISH:



Sparkling Argent



Almond Milk