

caracole



TOUCHE' LIGHT

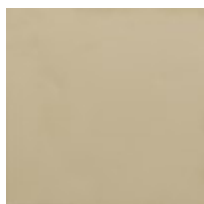
cla-022-423

COLLECTION: CARACOLE CLASSIC

DIMENSIONS: 20.5W x 17D x 25H

Simple yet elegant with an emphasis on function, this curved end table adds depth and reflection to seating areas. Features two tiers of White Rhino stone atop an angular metal base finished in a Whisper of Gold. A standout on its own, even more memorable in pairs.

FINISH:



Whisper_of_Gold