

# caracole



## D'ORSAY

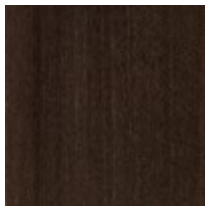
cla-022-203

**COLLECTION:** CARACOLE CLASSIC

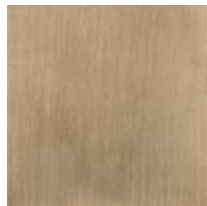
**DIMENSIONS:** 88W x 42D x 30H

Dually inspired, this modern take on a classic French trestle table recalls the vaulted ceiling of Musee D'orsay, a former Beaux-Arts railway station, and the elegance of a slipper with the same name. Balanced on its Champagne Gold metal frame, an expansive tabletop warms the room with richly grained, tupelo veneers in an Otter finish. Expands to 112" with a single leaf for impromptu parties and surprise dinner guests.

### FINISH:



Otter



Champagne Gold