

# caracole



## PERFECT TOGETHER - TALL

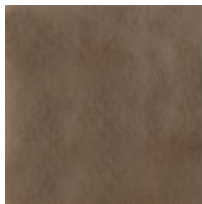
cla-021-441

**COLLECTION:** CARACOLE CLASSIC

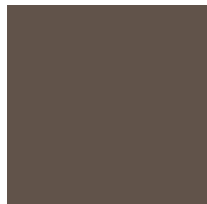
**DIMENSIONS:** 52W x 14D x 34H

An elegant nesting table when paired with Perfect Together-Short, this console makes a casual luxe statement in a classic mix of metal and stone. Its streamlined design features a Brushed Antique Brass-finished frame with tall tapered legs, capped in Deep Bronze metal ferrules for added distinction. A silver Travertine top introduces an organic element, showcasing the exquisite variations in color and veining found in natural stone. Style as a sofa table or a console in halls and entryways.

### FINISH:



Brushed Antique  
Brass



Deep Bronze