

# caracole



## END GAME

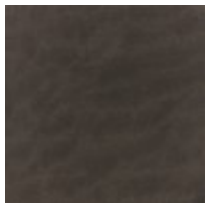
cla-021-417

**COLLECTION:** CARACOLE CLASSIC

**DIMENSIONS:** 21.5 dia x 25H

A juxtaposition of materials and finishes punctuates the natural beauty of wood and adds drama to the room with this classic end table. Appearing to float between acrylic posts, the top and bottom shelf are crafted in Makore veneers and finished in Charred Bark. Metal banding in a Whisper of Gold lends a jewelry-like detail and effortless glamour to living interiors and intimate spaces for conversation.

### FINISH:



Charred Bark



Whisper of Gold

