

caracole



OPEN AIR

cla-021-406

COLLECTION: CARACOLE CLASSIC

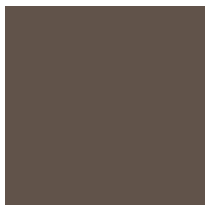
DIMENSIONS: 20W x 20D x 16H

Bunched or single, this architectural design lets you create an ever-changing cocktail table that's open to interpretation. Framed in Deep Bronze metal, a butcher block shelf in a pearlescent Moonstone finish illuminates the linear grain of Koto veneers. Topped in glass with a beveled edge, it's visually light, with an elevated, casual style. Pair with our Solid Ground cocktail table, wrapped in faux shagreen, to create a multi-dimensional, layered collection with luxe appeal.

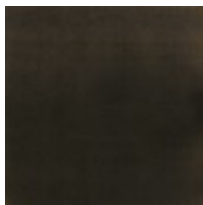
FINISH:



Moonstone



Deep Bronze



Almost Black