

# caracole



## ALL WRAPPED UP

cla-020-011

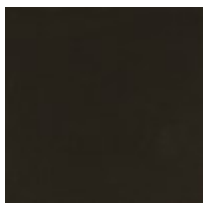
**COLLECTION:** CARACOLE CLASSIC

**DIMENSIONS:** 72W x 19D x 32H

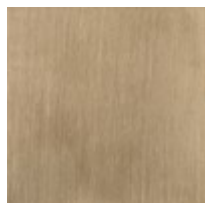
Merging minimalism with elements of mid-century modern, this streamlined dresser introduces a sophisticated style to bedroom interiors. Each drawer front is wrapped in a beautifully textured vinyl, embossed with a rivulet pattern like rain trickling down a windowpane. Casting a warm glow, metal trim in Champagne Gold artfully incorporates rounded pulls to seamlessly frame each drawer. Offers generous storage with soft-closing features and two felt-lined top drawers for an added note of luxury.

**CONSTRUCTION:** Top outside drawer: 4H x 17W | Top drawers have side guides | Top outside drawer interior: | Between sides: 15 | Back of front to front of back: 14.375 | Top of bottom to top of side: 2.75 | Top center drawer: 4H x 35.25W | Top drawers have side guides | Top center drawer interior: | Between sides: 33 | Back of front to front of back: 14.375 | Top of bottom to top of side: 2.75 | Bottom outside Drawer: 7.75H x 17W | Bottom drawers have undermount soft close guides | Bottom outside drawer interior: | Between sides: 15 | Back of front to front of back: 14.375 | Top of bottom to top of side: 5 | Bottom center drawer H: 7.75H x 35.25W | Bottom drawers have undermount soft close guides | Bottom center drawer interior: | Between sides: 33 | Back of front to front of back: 14.375 | Top of bottom to top of side: 5

### FINISH:



Dark Chocolate



Champagne Gold

### FABRIC:



9170-46CC