

# caracole



## CENTER STAGE

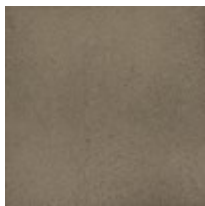
cla-019-408

**COLLECTION:** CARACOLE CLASSIC

**DIMENSIONS:** 42W x 42D x 17H

The essence of refinement, this captivating cocktail table deserves to be Center Stage in your home. Flawless from every angle, it elegantly combines metal and glass with highlights of white to brilliant effect. Its design begins as a crisp square frame with notched corners framing a ½-inch beveled glass top and wearing a Sundance Gold finish. An elegant touch of white inlay outlines the top rim while the open bottom shelf below features a coordinating element of tempered glass that has been back-painted in white. The resulting look is light, refreshing and amazing in its simplicity. Style it with favorite books and decorative accessories and you have a statement-making centerpiece for any seating area.

### FINISH:



Sundance\_Gold