

# caracole



## ON THE EDGE

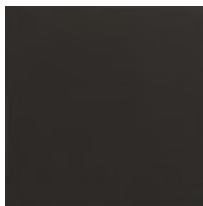
cla-019-042

**COLLECTION:** CARACOLE CLASSIC

**DIMENSIONS:** 36W x 2.25D x 36H

With this brilliant mirror, the designers looked to the beauty of diamonds for inspiration. Its multifaceted edge catches the light and reflects beauty from every angle. A band of Seal Skin finish adds an extra layer of luxury and outlines its crisp shape. With a  $\frac{3}{4}$ -inch bevel and a mirrored frame, this chic mirror can be hung as a diamond or a square to flatter your space.

### FINISH:



Seal\_Skin

