

caracole



COLLAR UP

cla-018-282

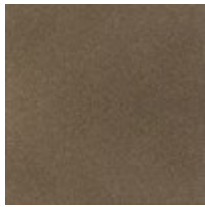
COLLECTION: CARACOLE CLASSIC

DIMENSIONS: 28W x 30D x 47.75H

A little sassy and a little demure, this stunning design makes the ultimate captain's chair or side chair. Its tall winged seat back attracts your attention while a tailored finger-pleat detail along its inside seat back makes it truly unforgettable. Expertly trimmed with a metal bar finished in Champagne Gold, this elegant feature matches the metal ferrules on its front feet. Its luxurious appearance is brought to life in a dressy, neutral-hued pebbled fabric with subtle hints of peacock and gold. At its center, the ruched detailing adds an extra layer of elegance and is tailored in a subtle caramel-colored velvet. A warm Harvest Bronze finish completes the look and accentuates the beauty of this distinctive chair's wood frame and legs.

CONSTRUCTION: Blendown cushion. | Webbed seat.

FINISH:



Harvest_Bronze

FABRIC:



Body Fabric:
3200-11CC-P
Performance,
Inside Pleated
Detail 2595-
44CC-P
Performance