

caracole



FANFARE ARM CHAIR

cla-018-271

COLLECTION: Caracole Classic

DIMENSIONS: 24.25W x 29D x 40H

An elegant match for today's best-dressed dining room, this shapely arm chair conveys sophisticated charm. Its attractive silhouette is complemented by an exquisite back featuring an Art Deco-inspired fan pattern crafted of Koto veneer and finished in Winter Wheat. This chair's rounded frame is trimmed in Warm Reflections while a Golden Blonde Leaf finish accents its arms. Upholstered in an elegant neutral performance fabric, its seat and seat front provide stylish comfort. A touch of Champagne Gold on its metal-plated ferrules completes its designer appearance.

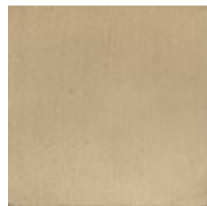
FINISH:



Winter Wheat

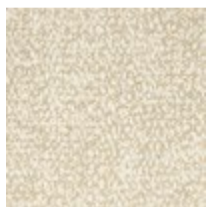


Warm Reflections



Golden Blonde Leaf

FABRIC:



2676-34CC-P