

caracole



FAN CLUB DRESSER

cla-018-031

COLLECTION: CARACOLE CLASSIC

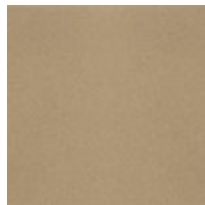
DIMENSIONS: 68.25W x 20D x 36.75H

You can't help but be a big fan of this dazzling dresser. A one-of-a-kind fan motif created with Koto veneers finished in Winter Wheat makes an artful statement across its nine drawer fronts. Its distinctive hardware is plated in Champagne Gold and features a gorgeous Mother of Pearl inlay. At the bottom of its top drawer is an Art Deco-inspired silkscreen, while its drawer interiors are in Warm Reflections. Outlined in a lustrous Warm Reflections, its graceful silhouette is completed with metal-plated ferrules in Champagne Gold.

FINISH:



Winter Wheat



Warm Reflections