

# caracole



## **DOUBLE BREASTED TAILORING**

cla-017-051

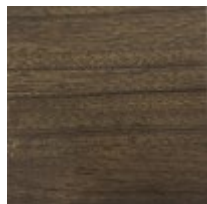
**COLLECTION:** CARACOLE CLASSIC

**DIMENSIONS:** 46W x 20D x 59H

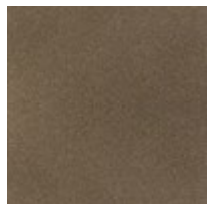
Paldao wood is on full display in this five-drawer chest that has been dressed in "Double-Breasted Tailoring" equal to a fine suit. This exotic wood has been

finished in soft Sepia, with the case outlined in Harvest Bronze. Custom designed ring pulls in plated Whisper of Gold line the drawer fronts of this chest. Each drawer features soft-closing guides.

**FINISH:**



Sepia



Harvest Bronze