

caracole



MASTERPIECE

cla-016-011

COLLECTION: CARACOLE CLASSIC

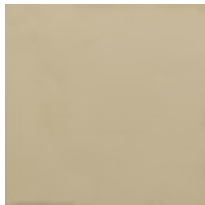
DIMENSIONS: 72.25W x 18.25D x 40.5H

Masterpiece is a dresser with hidden secrets. Its linear frame in Charcoal Anegre is a modern interpretation on classic Hepplewhite designs. Its clean façade shows off the Whisper of Gold custom round ribbed pulls and thin crisscrossed stretchers between the tall square-tapered legs. Six drawers, painted on the inside in Seal Skin, are generous in size. The top of the piece is embedded with dark glass. The top right drawer has dividers and a taupe/charcoal herringbone pad. The front of the left drawer drops down. At the bottom of the piece are two hidden drawers for papers and valuables. This is a signature dresser with dignified style.

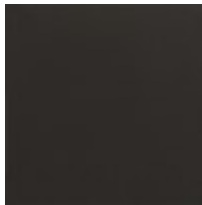
FINISH:



Charcoal Anegre



Whisper of Gold



Seal Skin