

caracole



TOP DOWN APPROACH

cla-015-681

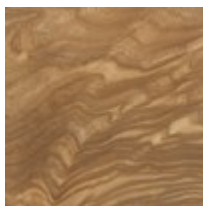
COLLECTION: CARACOLE CLASSIC

DIMENSIONS: 80W x 20D x 36H

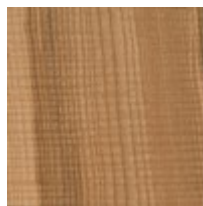
Create a stunning focal point for entertaining in the living or dining room with this captivating console that pushes the design envelope. Sleek styling, trapezoidal shaping and unusual materials come together to modernize this 1970's retro-inspired credenza. Its design takes its cue from the rich and diverse patterns found in nature. It's sleek yet organic, giving it a fresh unexpected feel. Finished in Natural to highlight the expressive quality of the veneer, the piece is adorned with sculpted hardware and a handsome Dark Bronze Metal base. Pair it with striking, nature-centric, black and white photography for an intriguing natural vignette. The piece's four doors open up to reveal ample storage, perfect for neatly stowing away entertaining essentials or concealing electronics.

CONSTRUCTION: Center door drawer: 31.75"W x 13.5"D x 3.25"H. | Shelf: 36.75"W x 18.5"D x 18"H without shelf. | Behind outside doors shelf: 18.5"W x 18"D x 25.25"H.

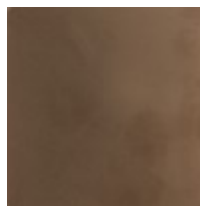
FINISH:



Natural Burl



Natural Longwood



Dark Bronze Metal