

caracole



OUTTA-SIGHT

cla-015-053

COLLECTION: CARACOLE CLASSIC

DIMENSIONS: 44.5W x 23.5D x 86H

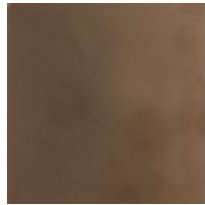
A naturally beautiful Burl veneer in our soft Mist finish is paired with a Dark Bronze Metal base making this wardrobe irresistibly gorgeous and imminently versatile. Its artistic, geometric door and drawer configuration is both aesthetically pleasing and wildly functional. This silhouette's five doors and one drawer are expertly outfitted to keep you luxuriously organized. Open it up to discover couture appointments and motion activated lighting including nine adjustable shelves, a folded shirt insert, a clothes rod, and a purse sling.

CONSTRUCTION: Top left door shelves: 17.5"W x 20.5"D x 24.5"H. | Center top door shelves: 10.5"W x 20.5"D x 35.75"H. | Top right door shelves: 12"W x 20.5"D x 35.75"H. | Bottom left door shelves: 17.25"W x 20.5"D x 46.75"H. | Center shirt storage: 17"W x 22.5"D x 10.5"H. | Bottom drawer: 21.5"W x 15"D x 17"H.

FINISH:

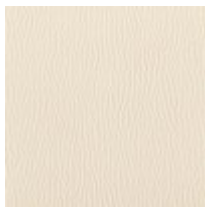


Mist Burl



Dark Bronze
Metal

FABRIC:



Fabric: 2457-
86CC