

caracole



VALENTINA

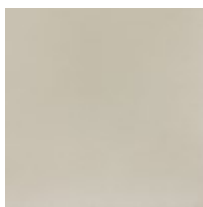
c113-422-011

COLLECTION: VALENTINA

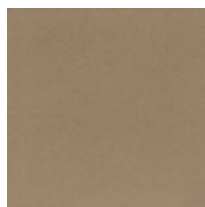
DIMENSIONS: 72W x 20D x 38H

Mirror-like drawer fronts introduce a warmly reflective aesthetic, created from v-groove cut, back-painted glass in a striking radial pattern. A silkscreened pinstripe detail frames the top and adds a touch of luxe, complemented by tapered legs dressed in Bronze Gold ferrules. Eight soft-close drawers offer tucked away storage, with Linen-painted interiors to coordinate with its Matte Pearl frame.

FINISH:



Matte Pearl



Golden Shimmer



Bronze Gold