

caracole



VALENTINA

c110-422-031-a

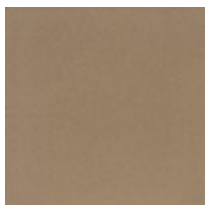
COLLECTION: VALENTINA

DIMENSIONS: 32W x 35.5D x 32H

A Golden Shimmer finish calls attention to Valentina's enveloping silhouette, accentuated by an exposed wood frame that starts and ends with sleek, tapered legs. Exquisite tailoring features a tight back and button-tufted seat in a micro-denure chenille fabric with a textured ottoman weave. A velvet accent pillow with an embossed botanical pattern adds a hint of romance and timeless finishing touch.

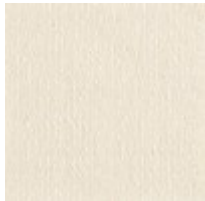
CONSTRUCTION: No sag | Seat cushion with foam. | Throw pillows with pure feather down.

FINISH:

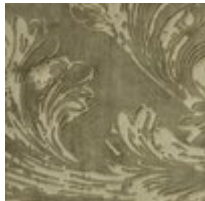


Golden_Shimmer

FABRIC:



Body Fabric: 2901-
34CC-P
Performance



Pillow Fabric: 1-22" x
22" Pillow Front
5148-53CC, Back
3251-56CC

