

caracole



DOUBLE DRESSER

c093-020-011

COLLECTION: LILLIAN

DIMENSIONS: 75.5W x 20D x 37.5H

Designed with a radiating sunburst pattern, this generously sized double dresser eloquently mixes glamour and functionality. Features six, soft-close drawers crafted in koto veneers with an illuminating Stone Manor finish, and Art Deco-inspired pulls with a ceramic inset for subtle ornamentation. Carved legs add a note of opulence in a glimmering Soft Radiance paint.

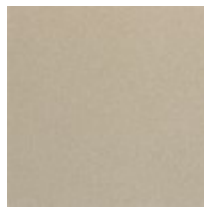
FINISH:



Stone Manor



Ivory Wash



Soft Radiance