

# caracole



## CHAIR

c090-020-131-a

**COLLECTION:** LILLIAN

**DIMENSIONS:** 31.25W x 30.5D x 30.75H

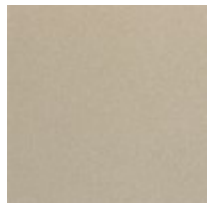
Beautifully embellished, the Lillian accent chair makes a luxe statement and adds refined comfort to conversation areas. Wrapping the inside and outside of its elegant barrel-back, a silk screened fan motif introduces a modernized Art Deco element in Soft Radiance paint. Fine tailoring in a cream ottoman weave fabric also wraps the inside and outside of its enveloping silhouette, poised on carved legs that curve outward on the back. For a finishing touch, we've added a toss pillow in shimmering grasscloth satin.

**CONSTRUCTION:** No sag seat. | Springdown cushion. | Feather down pillow.

### FINISH:



Stone Manor



Soft Radiance

**FABRIC:**



Body Fabric: 2811-75CC



Pillow Fabric: 1-22" x 18" Pillow 3243-74CC