

# caracole



## CHAIR

c060-419-033-a

**COLLECTION:** FONTAINEBLEAU

**DIMENSIONS:** 28.5W x 29.5D x 35H

Bold and unforgettable, this remarkable chair will distinguish any room with style. Fully upholstered and tailored to perfection, its extraordinary shape features a uniquely curved floating arm and open back. Elegant nailhead trim embellishes its outside back while a metallic finish in Oracle Silver leaf highlights the exposed elements of its wood frame. A Rococo-inspired carving sits like a miniature crown at the top of its graceful open back and is highlighted in silver leaf. With its intriguing silhouette and layers of sumptuous luxury, there's clearly no equal for this enchanting chair.

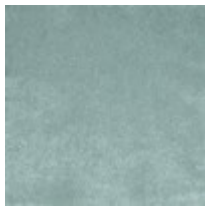
**CONSTRUCTION:** Plush poly foam cushion. | No sag seat.

### FINISH:



Oracle\_Silver\_Leaf

### FABRIC:



Body Fabric:  
2675-13CC