

caracole



CHAIR AND 1/2

c050-017-021-a

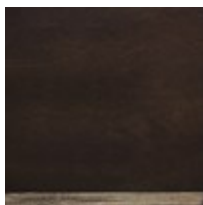
COLLECTION: LAFAYETTE

DIMENSIONS: 53.5W x 43.5D x 34H

Regal seating takes center stage in this dramatic diamond button-tufted chair. Drawing inspiration from the flowing curves, embellished details and oversized proportions of the Rococo era, this piece has been graciously refined for today's generously proportioned rooms. The softly winged top and generous curvature of the back lends luscious elegance to the piece. Enrobed in deep Prussian blue chenille, the deep button tufting extends throughout the piece. Elegant brocade trim around the base of the pleated dressmaker skirt, a slightly exposed Warm Umber wood frame and deep bronze nails complete this well-dressed chair.

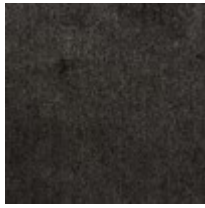
CONSTRUCTION: Plush poly foam cushion. | No sag seat. | Feather down pillow.

FINISH:



Warm_Umber

FABRIC:



Body Fabric: 2452-12C, Tape Trim around Bottom of Skirt U00457



Pillow Fabric: 1-22''' x 22''' Pillow 5123-11C



1-20''' x 20''' Pillow 2452-12C